

## Environmentally - Friendly Forklift Trucks



Quick parts supply



Easy maintenance



Global network

### CERES SYSTEM

CERES(Construction Equipment Resource Support) is HHI's new information system on all Hyundai construction equipment for our overseas dealers and branch offices.  
<http://ceres.hhi.co.kr>



## 15L/18L/20LA-7

- CABIN & HEATER
- SIDE SHIFT
- INTEGRAL SIDE SHIFT
- FORK
  - 750mm, 850mm, 1050mm, 1200mm, 1350mm, 1500mm
- OVER SHOE
  - 1300mm, 1500mm, 1700mm
- TILTING
  - 68°, 85°, 32°
- TIRE
  - Cushion, No-marking
- SEAT
  - Pocket, Arm Rest, Hip Rest
- LPG CLAMP
  - Swing Out, Swing Down
- M.C.V
  - 4-Spool
- MASTER SWITCH
- BEACON LAMP
- HAZARD SWITCH
- WORK LAMP
- LICENCE LAMP
- OPSS
  - Taravél, Taravél + Mast
- ATTACH PIPING
  - 3 Spool-piping, 4 Spool-piping

※ Hyundai is continuously upgrading and improving its products. It therefore reserves the right to supply products, which may differ slightly from description and illustration in this catalog. For further information on options, consult with Hyundai's dealer. Specifications are subject to change without notice.

**HYUNDAI**  
HEAVY INDUSTRIES CO., LTD.  
CONSTRUCTION EQUIPMENT DIVISION

Head Office 1 CHEONGNA-DONG, DONG-KU, ULSAN, KOREA  
Tel: 82(0)52-200-7979 Fax: 82(0)52-200-7970 2770  
(Sales Office)  
U.S. Operation Hyundai Construction Equipment U.S.A., Inc.,  
955 ESTES AVENUE, ELK GROVE VIL, ILL. 60007  
Tel: (708) 442-3222 Fax: (708) 442-3274  
European Operation Hyundai Heavy Industries Europe N.V.,  
VOSSENDAAL 11, 2440 GEEL, BELGIUM  
Tel: (32) 14-862200 Fax: (32) 14-838905 - 08

PLEASE CONTACT

[www.hyundai-ce.com](http://www.hyundai-ce.com)

2007. 9 Rev 0.

Building a better future  
**Global Leader**

FORKLIFT *Excellent* MODEL

## 15L/18L/20LA-7

HYUNDAI LPG FORKLIFT TRUCKS



**HYUNDAI**  
HEAVY INDUSTRIES CO., LTD.

※ Some of the photos may include optional equipment.

We build a better future

# Superior Power & High Performance

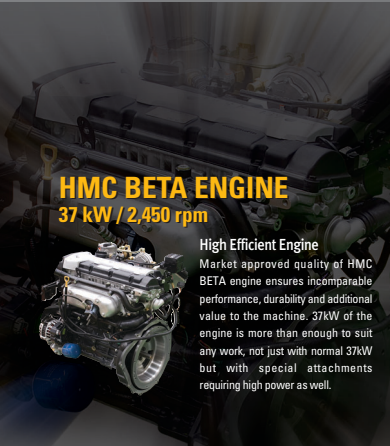


**OPSS (Operator Presence Sensing System)**  
Control of mast tilting, lifting and lowering is not possible through operation of the appropriate control when the operator is not in the normal position. (Option)



15L / 18L / 20LA -7

Hyundai introduces a new line of 7-series LPG forklifts. Excellent power and performance makes your business more profitable.



## HMC BETA ENGINE

37 kW / 2,450 rpm

**High Efficient Engine**  
Market approved quality of HMC BETA engine ensures incomparable performance, durability and additional value to the machine. 37kW of the engine is more than enough to suit any work, not just with normal 37kW but with special attachments requiring high power as well.



Smooth running, efficient and ergonomically designed, 15L/18L/20LA-7 series are made to meet your needs.

### Operator friendly gauges and water-resistant monitor panel



- ① Parking brake lamp
- ② Directional indicators
- ③ Fuel warning lamp
- ④ Engine oil warning lamp
- ⑤ Transmission oil temperature warning lamp
- ⑥ Battery charging warning lamp
- ⑦ Air cleaner filter warning light
- ⑧ Working light indicator
- ⑨ Water separator lamp
- ⑩ Pre-heater indicator
- ⑪ Water temperature gauge
- ⑫ Fuel gauge
- ⑬ Hour meter
- ⑭ Engine check lamp
- ⑮ Seat belt warning
- ⑯ OPS warning



**Wet disc brake system**  
The adoption of Wet disc type brake improves brake performance. Brake pedal effort is improved about slope and Wet disc brakes have service intervals 5 times longer than conventional.



**Increased mast tilting angle**  
Utilizing the mast tilting angle of 6 degrees forward and 10 degrees backward, the operator can safely and rapidly perform loading and unloading jobs.



**Faster Travel Speed & Gradeability**  
The powerful high-output engine provides greater acceleration, better gradeability and faster travel speed on any tough terrain or slope.

**Travel speed (MAX)**

- 15L-7 : 20.7 km/h (12.9 mph)
- 18L-7 : 20.7 km/h (12.9 mph)
- 20LA-7 : 20.7 km/h (12.9 mph)



- Gradeability (MAX)**
- 15L-7 : 37%
  - 18L-7 : 33.1%
  - 20LA-7 : 31%

### The new style 15L/18L/20LA-7



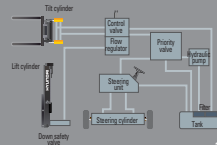
### Fast and stable performance

Being able to quickly raise and lower the mast, as well as tilt it forward and backward, provides the best operational conditions during unloading. When the truck is fully loaded, mast lowering speed is carefully controlled to ensure safety by the down control valve.



### State-of-the-art hydraulic system

The latest large-capacity hydraulic system reacts quickly during operation, and a low-noise control valve increases both efficiency and durability.



# Comfortable Operation



**Perfect fit**  
An ergonomically designed operator's compartment enables the driver to select the most comfortable working position for increased productivity.

A design based on human engineering relieves fatigue and enhances operating performance.



**Quick Response of Operating Control Levers**  
Only minimal operator's effort is required for precise, safe and productive control.



**Multi-function switch lever**  
Multi-functional switch lever gives easy access to lights and horn.



**Parking Brake**  
Ratchet type parking brake requires less efforts from the operator to set.



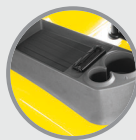
**Adjustable steering wheel**  
Steering wheel with horn button can be adjusted by a lever on the right-hand side for the most comfortable operator position.



**Easily adjustable suspension seat**  
An attractive and adjustable seat, based on a human engineering design, provides great comfort, safety and durability.



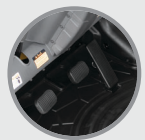
**Strong overhead guard**  
The safety overhead guard meets EEC and ANSI regulations and protects the operator during hazardous jobs.



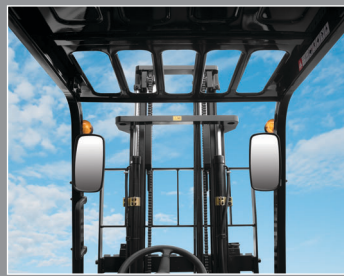
**Cup holder & console box**  
Additional storage spaces are located inside the operating space for operator's convenience.



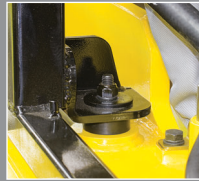
**Anti restart system**  
The new system protects the starter from restarting during engine operation.



**Ergonomically positioned pedals**  
Based on human engineering, the accelerator, brake and inching pedals are optimally positioned for convenience while operating the equipment.



**New high visibility for safe operation**  
The operator is able to work with increased safety and accuracy due to a wider view mast.



**Full-Floating headguard Mount**  
The anti-vibration rubber is installed between the guard and truck frame to reduce the source of vibration and noise while driving. This not only reduces operator's fatigue but also increases safety.

## High Durability & Easy Maintenance



### Ergonomics driving space design!

A design based on human engineering relieves fatigue and increase operator's efficiency.



**Expansion bellows**  
The expansion bellows absorbs vibration and reduces noise generated from the exhaust gas system and also extends the life cycle of exhaust gas system.



**Fully hydrostatic power steering**  
A hydraulic steering system always guarantees smooth and flexible steering, preventing overrun and kick-back.

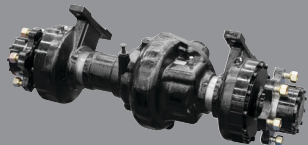


**Large footboard**  
Wide "open" step offers convenience and safety when entering and exiting truck.



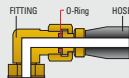
**Rear safety lamp**  
Rear combination lamps with directional indicators, rear lights and brake lights are positioned for a high level of safety.

### Highly durable electric shift - power transmission



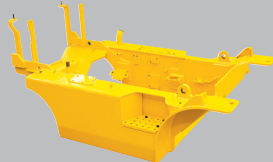
#### Highly Durable Split Type Drive Axle

Powershift transmission provides fast travel speed and quiet travel under any heavy load condition, and boosts work efficiency.



**ORFS (O-Ring Face Seal)**  
ORFS type hose prevents the leaking of hydraulic oil.

### Heavy duty single unit frame



#### Heavy duty single unit frame

Heavy duty single unit type frame, designed on the basis of accurate structural analysis, guarantees durability and safety.



### Centralized design for easy service!

An ideal arrangement of component parts ensures easy access and convenience for maintenance.



Engine oil condition check



Aluminum radiator with superb protection against heat



Portable Side Cover



An accessible, compact fuse box for easy inspection



Easy Change Air Cleaner (6 inch Cyclone Type)



Bright, protected headlights



Rotational battery installation

