

We build a better future



■ Photo may include optional equipment

HYUNDAI LPG FORKLIFT TRUCKS - Applied Tier 4 Engine

25L/30L/33L-7A

 **HYUNDAI**
HEAVY INDUSTRIES EUROPE

NEW criterion of Forklift Trucks

Hyundai introduces a new line of 7A-series LPG forklift trucks. Excellent power and performance make your business more profitable.



OPSS (Operator Presence Sensing System)

Control of mast tilting, lifting and lowering is not possible when the operator is not in the normal position.



■ Photo may include optional equipment

The new master on your job-site!

Smooth running, efficient and ergonomically designed, 25L/30L/33L-7A series are made to meet your needs.

44kW / 2,300 rpm



Powerful Engine

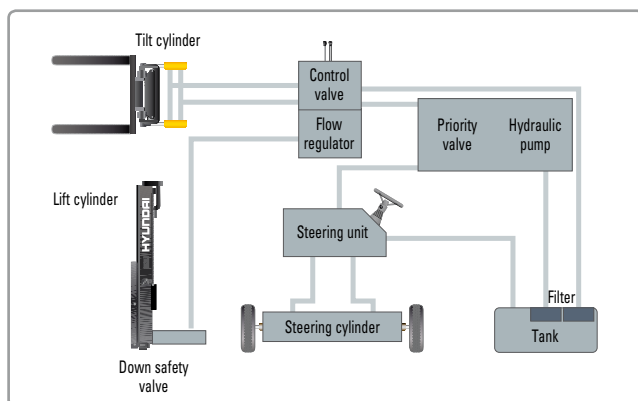
HMC L4KB(2.4L) Engine

Powerful and efficient engine Hyundai engine provides excellent fuel consumption, excellent torque and improved operator's comfort. (EPA/CARB Tier-IV Certified)

Fast and stable performance

Being able to quickly raise and lower the mast, as well as tilting forward and backward, the truck provides you the best operational conditions during loading/unloading operations.

With a loaded truck, mast lowering speed is carefully controlled by a control down valve to ensure full safety on the job.



State-of-the-art hydraulic system

The latest designed, large-capacity hydraulic system including a low-noise control valve shortens reaction time during operation and improves both efficiency and durability.



Fully hydrostatic power steering

A hydraulic steering system always guarantees smooth and flexible steering, preventing overrun and steering wheel kick-back.

High Power Low Noise



■ Photo may include optional equipment



Increased mast tilting angle

A mast tilting angle of 6 degrees forward and 10 degrees backward gives the operator a safe and rapid platform for loading and unloading jobs.

Faster travel speed & better grade-ability

The powerful high-output engine provides greater acceleration, better grade-ability and faster travel speed on any tough terrain or slope.



Grade-ability (Loaded)

25L-7A : 20.4°

30L-7A : 16.5°

33L-7A : 15.4°

Travel speed (Unloaded)

25L-7A : 17.7 km/h

30L-7A : 18.6 km/h

33L-7A : 18.6 km/h

Ergonomic operator friendly compartment design!

A design based on human engineering relieves fatigue and increases operator's efficiency.

Operator friendly gauges and water-resistant monitor panel



- | | | |
|---|------------------------------------|---------------------|
| ① Parking brake lamp | ⑥ Battery charging warning lamp | ⑫ Fuel gauge |
| ② Directional indicators | ⑦ Air cleaner filter warning light | ⑬ Hour meter |
| ③ Fuel warning lamp | ⑧ Working light indicator | ⑭ Engine check lamp |
| ④ Engine oil warning lamp | ⑨ Water separator lamp | ⑮ Seat belt warning |
| ⑤ Transmission oil temperature warning lamp | ⑩ Pre-heater indicator | ⑯ DPSS warning |
| | ⑪ Water temperature gauge | |



Easily adjustable suspension seat

An attractive and adjustable seat with armrests, based on a human engineering design, provides great comfort, safety and durability.



High visibility for safe operation

The operator is able to work with increased safety and accuracy due to a wider view mast.



Ergonomic positioned pedals

Based on human engineering, the accelerator, brake and inching pedals are optimally positioned for operator's convenience. Easy to remove cleanable rubber floor mat.



Cup holder & console box

Additional storage spaces are located inside the operating space.



Quick Response of Operating Control Levers

Only minimal operator's effort is required for precise, safe and productive control.



Travel Speed Control System (Option)



← In-Door : Max. Travel Speed 8 ~ 13 km/h

← Out Door : Max Travel Speed 15 ~ 19 km/h

■ Photo may include optional equipment



Adjustable steering wheel

The steering wheel with horn button can be adjusted by a lever on the left-hand side to improve operators comfortability.



Easy and safe shift lever

A single lever on the left side of the steering column gives the operator fast and easy control of travel direction. The engine can only be started in case of neutral position of this lever.



Multi-function switch lever

A multi-functional switch lever gives easy access to lights and horn.

Enhanced safety through high durability!

Safety and durability are priorities in the design of the equipment.



Strong overhead guard

The safety overhead guard meets ISO 6055 regulations and protects the operator during hazardous jobs.



Parking Brake

Toggle type parking brake requires less efforts from the operator to set.

Highly durable split type drive axle

The advanced drive axle always delivers the desired torque to the drive wheels



Large footstep & Handle

Wide "open" step ensures easy and safe access to the operator's seat



Expansion bellows

The expansion bellows absorbs vibration and reduces noise generated from the exhaust gas system and extends the life cycle.



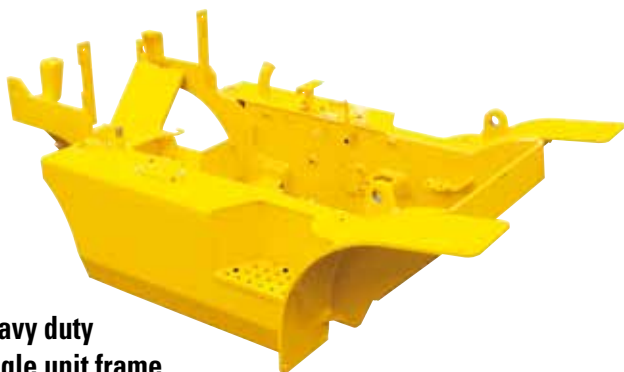
Electrically Monitored Air Filter

An air cleaner sensor alerts the operator of a restricted air filter so allowing replacement before a potential engine damage occurs.





■ Photo may include optional equipment



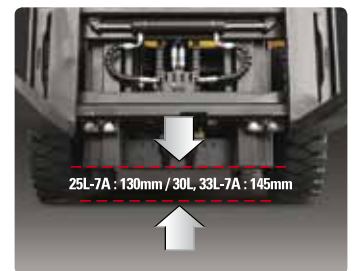
Heavy duty single unit frame

Heavy duty single unit type frame, designed on the basis of accurate structural analysis, guarantees durability and safety.



Bright, protected headlights

Bright, protected headlights are positioned for increased visibility in dark environments.



Ground clearance

The engine and transmission are assembled horizontally and positioned high in the frame to protect valuable components during operations on rugged surface.

Centralized design for easy service!

An ideal arrangement of components ensures easy access and convenience during maintenance.



Easy change air cleaner

The air filter is readily accessible for cleaning or replacement.



Fast Service Access for Daily Fluids Check



Rotational Battery Installation



One Touch, No Tool Floor Plate



Removable Side Panels for Ease of Service



Improvement in Maintenance of Electric Parts

Various electric parts are centralized in dash board resulting in effortless troubleshooting.



Easy Maintenance oil check

The T/M oil level can be checked easily without any disassembly.



Brake fluid reservoir

Highly visible and accessible reservoir makes daily inspections a quick and easy job.



An accessible, compact fuse box for easy inspection

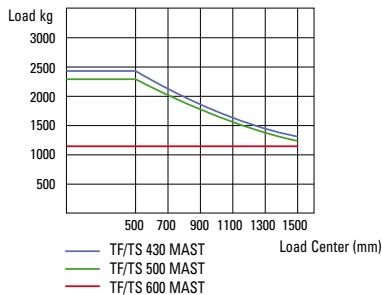
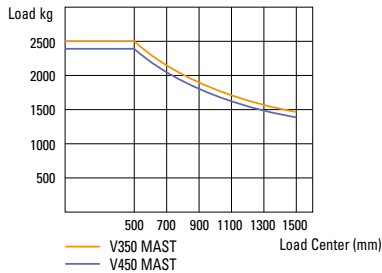
Mast Specifications

Mast Type	Maximum Fork Height mm		Overall Height (Lowered) mm			Free Lift (mm)						Tilt Angle degree		Load Capacity without Integral Side Shift 500mm LC (kg)						Load Capacity with Integral Side Shift 500mm LC (kg)						Truck Weight Unload (kg)									
						With Backrest			Without Backrest					Single Tire			Double Tire			Single Tire			Double Tire			Single Tire			Double Tire						
	25L-7A	30L-7A	25L-7A	30L-7A	33L-7A	25L-7A	30L-7A	33L-7A	25L-7A	30L-7A	33L-7A	Fwd	Bwd	25L-7A	30L-7A	33L-7A	25L-7A	30L-7A	33L-7A	25L-7A	30L-7A	33L-7A	25L-7A	30L-7A	33L-7A	25L-7A	30L-7A	33L-7A	25L-7A	30L-7A	33L-7A				
2/ Stage limited free lift	V300	3000	2900	2025	2040	2040	155	155	155	155	155	155	6	10	2500	3000	3300	2500	3000	3300	2500	3000	3300	2500	3000	3300	2500	3000	3300	3747	4247	4415	3883	4334	4512
	*V330	3300	3200	2175	2190	2190	155	155	155	155	155	155	6	10	2500	3000	3300	2500	3000	3300	2500	3000	3300	2500	3000	3300	2500	3000	3300	3766	4268	4439	3902	4354	4536
	V350	3500	3400	2275	2290	2290	155	155	155	155	155	155	6	10	2500	3000	3300	2500	3000	3300	2500	3000	3300	2500	3000	3300	2500	3000	3300	3783	4285	4454	3919	4372	4551
	V370	3700	3600	2425	2440	2440	155	155	155	155	155	155	6	10	2500	3000	3300	2500	3000	3300	2500	3000	3300	2500	3000	3300	2500	3000	3300	3805	4308	4478	3941	4395	4575
	V400	4000	3900	2575	2590	2590	155	155	155	155	155	155	6	10	2450	3000	3300	2500	3000	3300	2475	2950	3200	2500	2975	3300	2500	2975	3300	3835	4339	4510	3971	4426	4607
	V430	4300	4200	2725	2740	2740	155	155	155	155	155	155	6	6	2400	2925	3200	2475	3000	3300	2400	2875	3100	2450	2925	3300	2400	2875	3100	3887	4392	4564	4023	4478	4661
	V450	4500	4400	2875	2890	2890	155	155	155	155	155	155	6	6	2350	2875	3150	2425	2950	3300	2350	2825	3030	2400	2875	3300	2300	2825	3030	3909	4414	4587	4045	4501	4684
	V470	4700	4600	2975	2990	2990	155	155	155	155	155	155	6	6	2325	2825	3100	2400	2925	3300	2325	2750	3000	2375	2825	3200	2325	2750	3000	3923	4430	4603	4060	4516	4700
2/Stage full free lift	V500	5000	4900	3125	3140	3140	155	155	155	155	155	155	6	6	2250	2775	3050	2350	2850	3250	2275	2700	2930	2350	2775	3150	2350	2775	3150	3945	4452	4627	4082	4539	4724
	VF290	2932	2900	2025	2040	2090	845	860	910	845	1314	1269	6	6	2500	3000	3300	2500	3000	3300	2500	3000	3300	2500	3000	3300	2500	3000	3300	3792	4288	4459	3929	4374	4550
3/ Stage full free lift	VF320	3232	3200	2175	2190	2240	995	1010	1060	995	1464	1419	6	6	2500	3000	3300	2500	3000	3300	2500	3000	3300	2500	3000	3300	2500	3000	3300	3826	4323	4494	3963	4409	4585
	TF370/TS370	3700	3700	1825	1840	1890	645	660	710	645	1114	1069	6	6	2460	3000	3250	2500	3000	3300	2450	2900	3150	2500	2950	3300	2400	2850	3040	3883	4397	4602	4020	4483	4693
	TF400/TS400	4000	4000	1925	1940	1990	745	760	810	745	1214	1169	6	6	2400	2925	3160	2475	3000	3300	2400	2850	3040	2450	2900	3300	2300	2850	3040	3907	4422	4624	4044	4508	4715
	TF430/TS430	4300	4300	2025	2040	2090	845	860	910	845	1314	1269	6	6	2350	2850	3100	2425	2925	3300	2350	2775	3000	2400	2825	3200	2325	2725	2920	3925	4444	4644	4062	4530	4735
	TF450/TS450	4500	4500	2125	2140	2190	945	960	1010	945	1414	1369	6	6	2300	2800	3030	2375	2875	3250	2325	2725	2920	2350	2775	3150	2350	2775	3150	3947	4469	4666	4084	4555	4757
	TF470/TS470	4700	4700	2175	2190	2240	995	1010	1060	995	1464	1419	6	6	2250	2775	3000	2350	2825	3200	2275	2675	2900	2300	2725	3100	2300	2725	3100	3960	4483	4680	4097	4569	4771
	TF500/TS500	5000	5000	2275	2290	2340	1095	1110	1160	1095	1564	1519	6	6	2200	2700	2940	2275	2775	3125	2200	2600	2840	2275	2675	3030	2200	2600	2840	3983	4506	4702	4120	4592	4793
	TF550/TS550	5500	5500	2475	2490	2540	1295	1310	1360	1295	1764	1719	6	6	1700	2600	2000	2200	2675	3000	1700	2525	1900	2200	2575	2900	2000	2575	2900	4022	4550	4746	4159	4636	4837
TF600/TS600	6000	6000	2675	2690	2740	1495	1510	1560	1495	1964	1919	6	6	1150	1600	1100	2100	2575	2900	1150	1750	1000	2100	2475	2800	1000	2100	2475	4087	4620	4818	4224	4706	4909	
4/ Stage full free lift	QF610	6115	6115	2160	2175	2225	997	995	1045	997	1449	1449	3	3	1600	1800	1950	1850	2350	2830	1530	1710	1850	1750	2220	2750	4297	4767	4893	4433	4854	4969			
	QF660	6615	6615	2360	2375	2425	1197	1195	1245	1197	1649	1649	3	3	1500	1700	1850	1750	2200	2700	1430	1610	1750	1650	2070	2600	4356	4827	4952	4492	4914	5029			
	QF700	7015	7015	2460	2475	2525	1297	1295	1345	1297	1749	1749	3	3	1400	1500	1500	1700	2150	2580	1330	1420	1400	1600	2020	2460	4387	4857	4983	4523	4944	5059			
	QF745	7465	7465	2610	2625	2675	1447	1445	1495	1447	1899	1899	3	3	1100	1200	1000	1600	2050	2440	1040	1120	900	1510	1930	2340	4433	4903	5029	4569	4990	5105			
	QF790	7915	7915	2760	2775	2825	1597	1595	1645	1597	2049	2049	3	3	700	750	550	1000	1100	1300	650	680	500	920	990	1200	4533	5004	5129	4669	5091	5206			

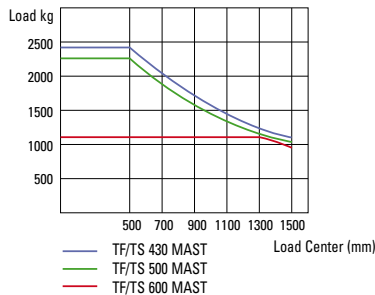
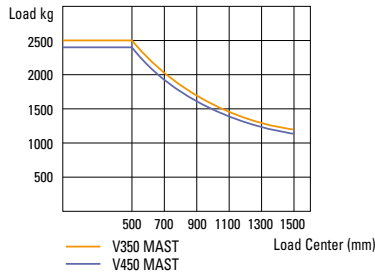
* TS-Mast : Wide Visible 3 Stage Full Free Lift Mast with 2 Free Lift Cylinders.

Load Capacity

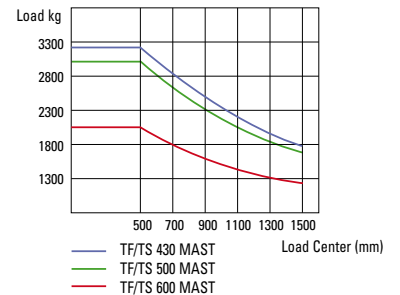
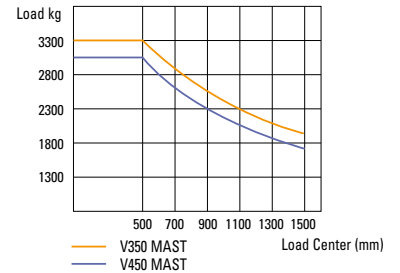
25L-7A



30L-7A



33L-7A



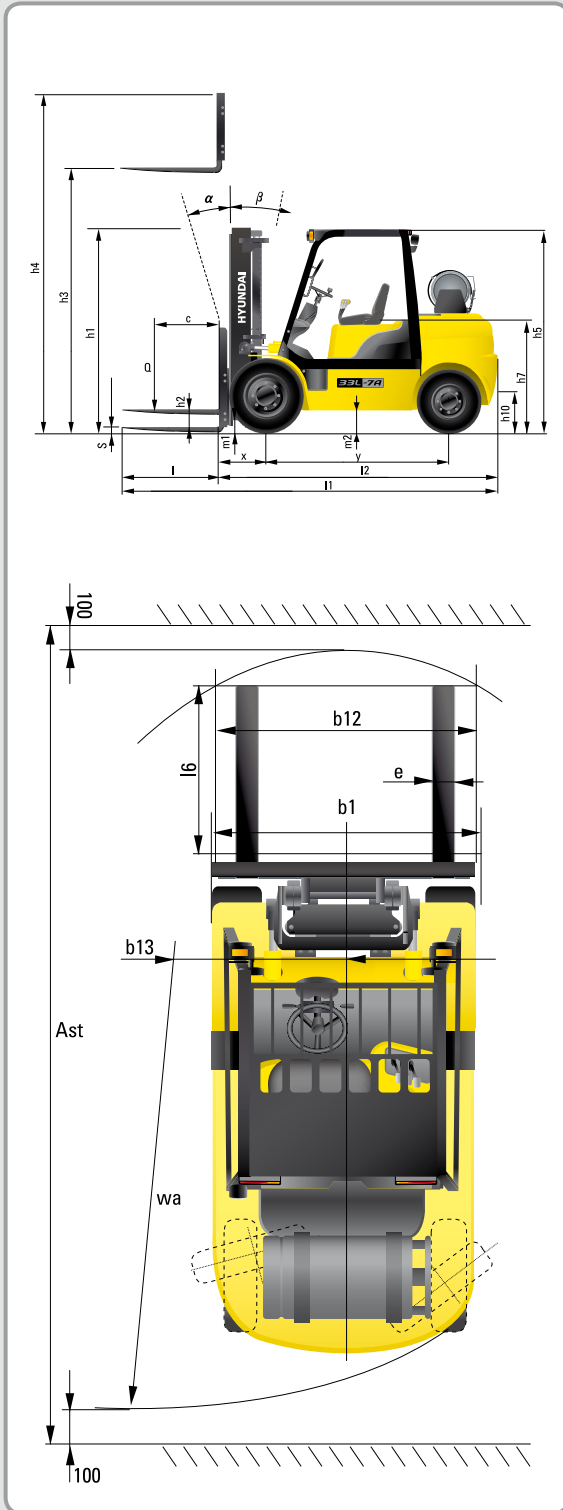
Optional Items

- **CABIN & HEATER**
- **INTEGRAL SIDE SHIFT**
- **SIDE SHIFT**
- **FORK**
900 mm; 1000 mm; 1200 mm; 1350 mm;
1500 mm; 1650 mm; 1800 mm

- **OVER SHOE**
1300 mm; 1500 mm; 1700 mm; 1800 mm
- **TILTING** : 6/6°; 3/3°
- **TIRE** : NO-MARKING, DOUBLE
- **SEAT** : POCKET, BELT, ARM REST, HIP REST
- **LPG CLAMP** : SWING OUT, SWING DOWN

- **M.C.V** : 4-SPOOL
- **ATTACH PIPING** : 3 SPOOL-PIPING, 4 SPOOL-PIPING
- **BEACON LAMP**
- **WORK LAMP**
- **TRAVEL SPEED CONTROL SENSOR**
- **PRECLEANER**

Dimensions



Specifications

Identification					
1.1	Manufacturer		Hyundai	Hyundai	Hyundai
1.2	Type		25L-7A	30L-7A	33L-7A
1.3	Drive: electric (battery or mains), diesel, petrol, fuel gas, manual		LPG	LPG	LPG ara
1.4	Type of operation: hand, pedestrian, standing, seated, order-picker		seated	seated	seated
1.5	Load capacity (standard)	Q (t)	2.5	3	3.3
1.6	Load center distance	c (mm)	500	500	500
1.8	Load distance, center of drive axle to forks	x (mm)	468	468	468
1.9	Wheelbase	y (mm)	1650	1700	1700
Weights					
2.1	Service weight	kg	3706	4196	4439
2.2	Axle loading, loaded front/rear	kg	5452 / 753	6287 / 910	6745 / 994
2.3	Axle loading, unloaded front/rear	kg	1486 / 2220	1578 / 2618	1566 / 2873
Wheels, chassis					
3.1	Tires: solid rubber, superelastic, pneumatic, polyurethane		Pneumatic	Pneumatic	Pneumatic
3.2	Tires size, front		7.00 - 12 - 12PR	8.15 x 15 - 14PR	8.15 x 15 - 14PR
3.3	Tires size, rear		6.00 - 9 - 10PR	6.50 - 10 - 12PR	6.50 - 10 - 12PR
3.5	Wheels, number front / rear (X= driven wheels)		2 x / 2	2 x / 2	2 x / 2
3.6	Track width, front	b10 (mm)	965	1005	1005
3.7	Track width, rear	b11 (mm)	980	980	980
Basic dimensions					
4.1	Mast/fork carriage tilt forward / backward	degrees	6 / 10	6 / 10	6 / 10
4.2	Lowered mast height (standard)	h1 (mm)	2175	2190	2190
4.3	Free lift	h2 (mm)	155	155	155
4.4	Lift height (standard)	h3 (mm)	3300	3300	3200
4.5	Extended mast height (standard)	h4 (mm)	4485	4485	4385
4.7	Overhead load guard (cab) height	h5 (mm)	2160	2180	2180
4.8	Seat height / standing height	h7 (mm)	1110	1130	1130
4.12	Coupling height	h10 (mm)	283	299	299
4.19	Overall length	l1 (mm)	3644	3742	3782
4.20	Length to face of forks	l2 (mm)	2594	2692	2732
4.21	Overall width	b1 (mm)	1160	1230	1230
4.22	Fork dimensions LxWxT	L x E x S (mm)	1050 x 100 x 45	1050 x 122 x 45	1050 x 122 x 45
4.23	Fork carriage type	II / A	III / A	III / A	III / A
4.24	Fork carriage width	b12 (mm)	1102	1102	1102
4.31	Ground clearance, loaded, under mast	m1 (mm)	130	145	145
4.32	Ground clearance, centre of wheelbase	m2 (mm)	171	189	189
4.33	Aisle width for pallets 1000 x 1200 crossways (L x W)	Ast (mm)	3966	4066	4102
4.34	Aisle width for pallets 800 x 1200 lengthways (W x L)	Ast (mm)	4166	4266	4302
4.35	Turning radius	Wa (mm)	2298	2398	2434
4.36	Smallest pivot point distance	b13 (mm)	714	731	731
Performance data					
5.1	Travel speed, unloaded	km/h	17.7	18.6	18.6
5.2	Lift speed, loaded/unloaded	m/s	600 / 610	580 / 610	480 / 510
5.3	Lowering speed, loaded/unloaded	m/s	500 / 450	500 / 450	500 / 450
5.5	Drawbar pull, loaded	N	2412	2290	2302
5.7	Gradient performance, loaded/unloaded	%	37.1	29.7	27.6
5.9	Acceleration time, loaded/unloaded (10m)	sec	-	-	-
5.10	Service brake		FOOT	FOOT	FOOT
Engine					
6.1	Engine manufacturer / type		HMC L4KB	HMC L4KB	HMC L4KB
6.2	Engine power acc. To ISO 1585	kW	44	44	44
6.3	Rated speed	1/min	2300	2300	2300
6.4	No. of cylinder / cubic capacity	/cm3	4 / 2359	4 / 2359	4 / 2359
6.5	Fuel consumption acc. to VDI cycle	ℓ/h	-	-	-
Other details					
8.1	Type of drive control		Power Shift	Power Shift	Power Shift
8.2	Operating pressure (attachments)	bar	220 / 165	220 / 165	220 / 165
8.3	Hydraulic oil flow (attachments)	ℓ/min	31.2	31.2	31.2
8.4	Sound level at driver's ear according to DIN 12053	db(A)	80	80	80

Standard and optional equipment may vary. Contact your Hyundai dealer for more information. The machine may vary according to International standards. All imperial measurements rounded off to the nearest pound or inch.

PLEASE CONTACT

 **HYUNDAI**
HEAVY INDUSTRIES EUROPE
CONSTRUCTION EQUIPMENT

Hyundai Heavy Industries Europe N.V.

VOSSENDAAL 11, 2440 GEEL, BELGIUM TEL: (32) 14-56-2200 FAX: (32) 14-59-3405